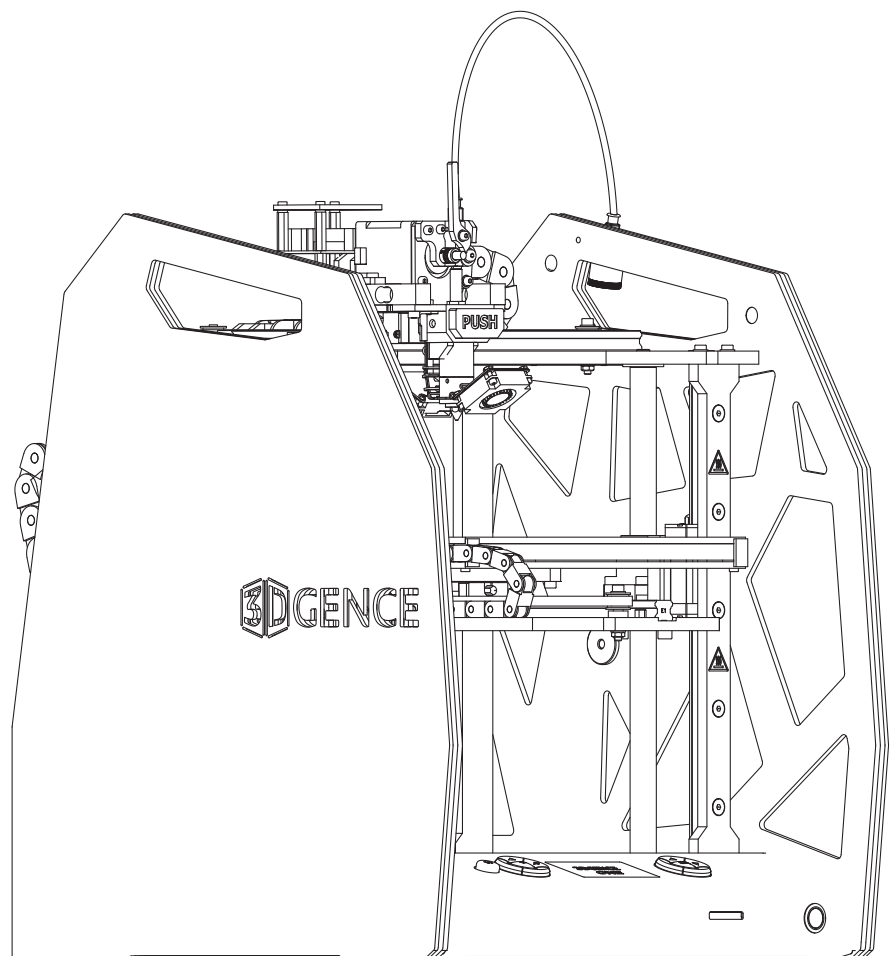


Manual:

# PRINTER'S FIRMWARE UPDATE

---

3DGence ONE



## 3DGence ONE

To update the printer firmware it is necessary:

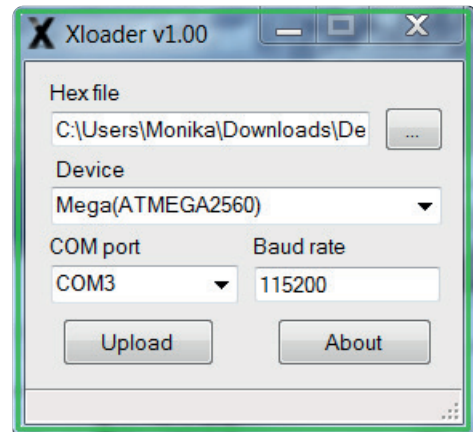
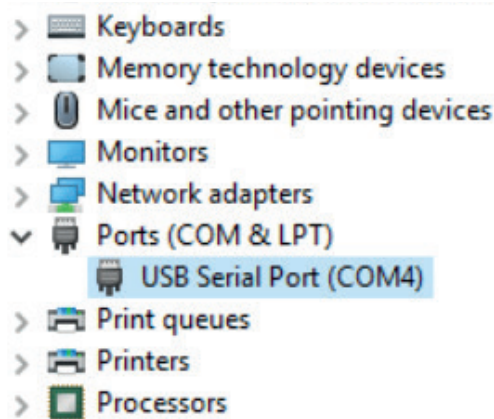
- the file with the current firmware in \*hex format,
- the init.g file,
- the Xloader.

1 Connect the printer to the computer with the USB cable and turn on the printer power.

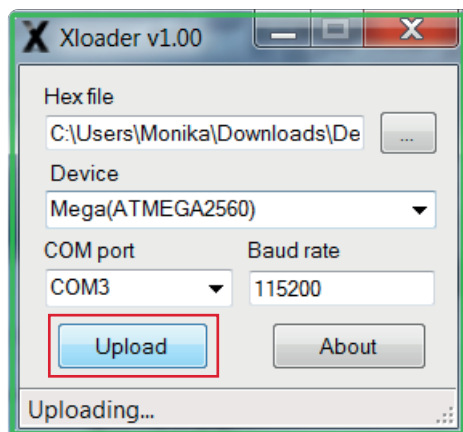
2 Run the Xloader software:

- in „Hex file” field select the path to the appropriate file with firmware;
- in „Device” field select option Mega(ATMEGA2560);
- in „COM port” field select the COM port which your printer is currently assigned to.

COM port can be checked by entering in: **Windows Control Panel → System and Security → System → Device Manager → Ports (COM and LPT) → USB Serial Por (COM....)**



3 Confirm the update via the **Upload** button and wait for the update to complete. It may take a few minutes. Once the update process is completed successfully „....bytes uploaded” message displayed.



**WARNING!** During the upadte, do not perform any actions on the panel. Do not disconnect the printer from USB and power port because this may cause failure of update.

## 3DGence ONE

- 4 After the succesfull update, prepare the printer to work with the new Software by following actions:
- load the init.g file into memory card;
  - turn off the printer;
  - insert the memory card into the SD card slot of the printer;
  - turn on the printer and wait for the sound signal. It informes that the configuration has been successfully loaded. The init.g file will be automaically deleted. If it does not, delate it manually from SD card;
  - turn off the printer;
  - turn on the printer and follow the on-screen instructions (quick start wizard).

**WARNING!** Do not touch the printer while the table is scanned. The hotend should be clean, the filament should be unloaded, and the extruder's lever should be pulled out to the left.